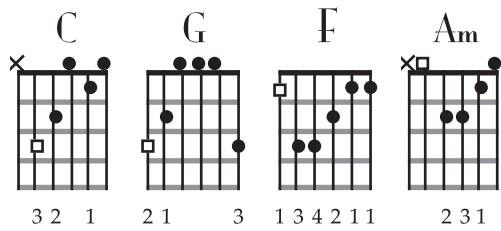


# Stand By Me

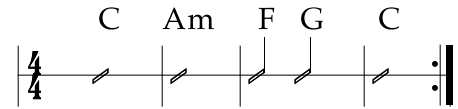
Ben E King, Jerry Leiber and Mike Stoller

1961

No Capo

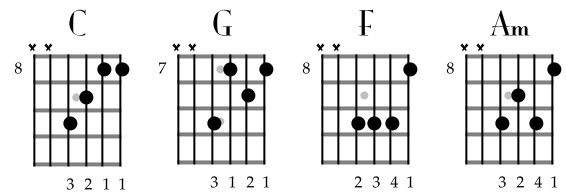


When the night has come and the land is dark  
 and the moon is the only light we'll see  
 No, I won't be afraid. Oh, I won't be afraid  
 just as long as you stand, stand by me



And darlin', darlin', stand by me. Oh, stand by me  
 Oh, Stand, Stand by me, Stand by me

If the sky that we look upon should tumble and fall  
 Oh, the mountains should crumble to the sea  
 I won't cry, I won't cry. No, I won't shed a tear  
 just as long as you stand, stand by me



## CHORUS

Am F G C

TAB: 3-3-3 2-3-3 3-2 | 0-0-0 0-0-0 3 | 1-1-1 0 3-3-3 2 | 3-3-3 2-3-3 3-2

