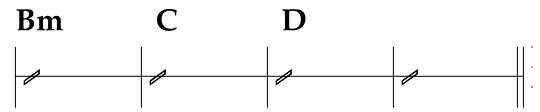
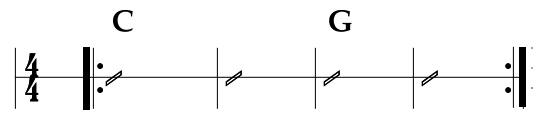


Bad Timing

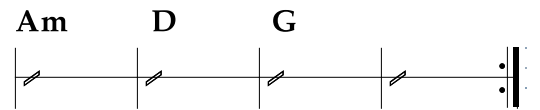
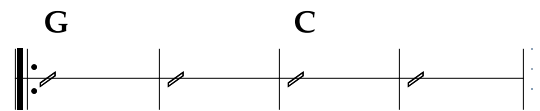
Blue Rodeo

C
Hey its me, what a big surprise
Calling you up from a restaurant round the bend
C
Just got in from way up north
Aching and tired now, and I could use a friend
Bm C D
Might be a fool to think that you do wanna see me again
C
I know its been a while since I talked to you
Nothing wrong, it's just nothing ever goes as planned
C
Many times I thought I'd call
Didn't have your number in my hand
Bm C D
I know its true, you'd never do the same thing to me

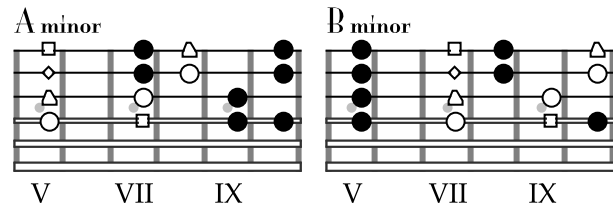
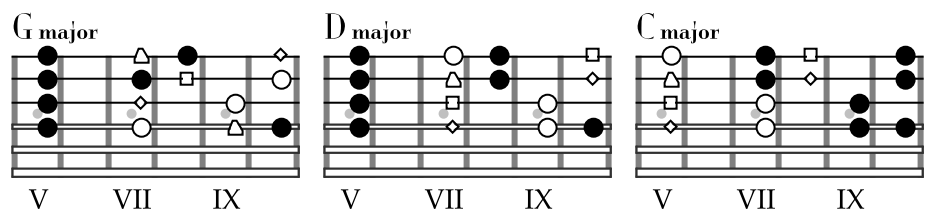
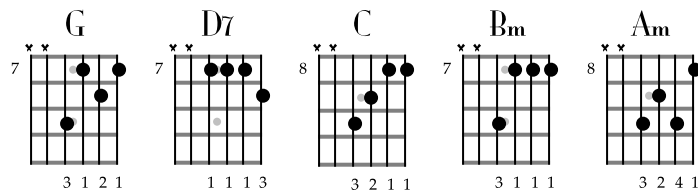
Verse



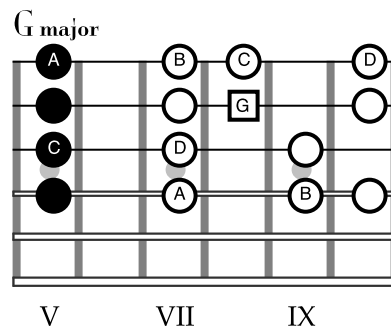
Chorus



I never meant to make you cry
and though I know I shouldn't call
It just reminds us of the cost
Oh, of everything we've lost
Bad timing that's all
And maybe soon there'll come a day
When no more tears will fall
We each forgive a little bit,
then we both look back on it
as just bad timing that's all



C
Used to have so many plans
Something always seemed to turn out wrong
C
Never could catch up to you
Movin' on and doing all you've done
Bm C D
I don't know why, the harder I try, the harder it comes



CHORUS