

# Beer Run

Todd Snider  
New Connection (2001)  
Capo II

G  
B-double E double R-U-N beer run  
D  
B-double E double R-U-N beer run  
G  
(all we need is a ten and fiver/Oh, how happy we would be)  
C  
(a car and key and a sober driver/had we only brought a better fake ID)  
G D G  
B-double E double R-U-N beer run

G  
A couple of frat guys from Abilene  
D  
drove out all night to see Robert Earl Keen  
Em  
at the K-PIG Swine and Soire Dance.  
C  
They wore baseball caps and khaki pants.  
G D  
They wanted cigarettes, so to save a little money  
G C  
They bummed one off this hippie That smelled kinda funny.  
G D  
And next thing they knew they were both pretty hungry and  
A D  
pretty thirsty too

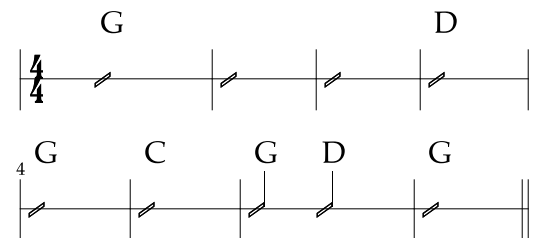
## CHORUS

G  
They found a store with a sign that said their beer was coldest.  
D  
So they sent in Brad 'cause he looked the oldest.  
Em  
He got a case of beer and a candy bar,  
C  
walked over to where all the registers are  
G D  
laid his fake I.D. on the counter top.  
G C  
The clerk looked, and turned to look back up and stopped.  
G D  
He said "Son, I ain't gonna call the cops, but I'm gonna have to keep this card"  
A D  
the guys both took it pretty hard.

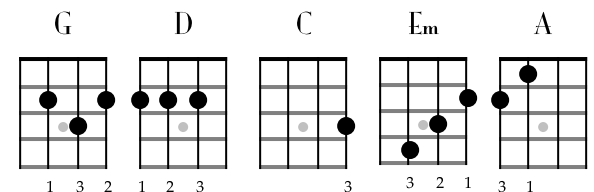
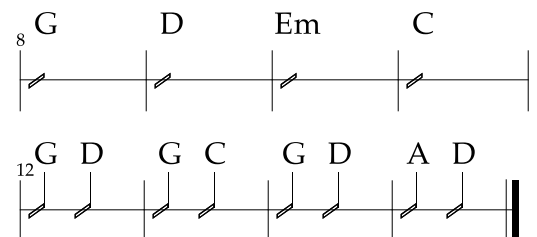
## CHORUS

♩ = 112

### Chorus

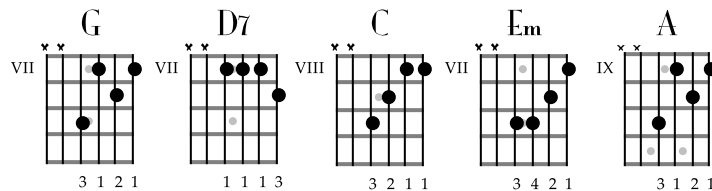


### Verse



<sup>G</sup>  
They met another old hippie named Sleepy John,  
<sup>D</sup>  
claimed to be the one from the Robert Earl Keen song  
<sup>Em</sup>  
So they gave him all their cash, he bought them some brews.  
<sup>C</sup>  
Was a beautiful day out in Santa Cruz  
<sup>G</sup> <sup>D</sup>  
They were feelin' so good it Should of been a crime.  
<sup>G</sup> <sup>C</sup>  
The crowd was cool, and the band was prime.  
<sup>G</sup> <sup>D</sup> <sup>G</sup> <sup>D</sup>  
They made it back up front to their seats Just in time to they could sing with all their friends  
<sup>A</sup> <sup>D</sup>  
"the road goes on forever and the party never ends".

## CHORUS



C'mon, guy. You know  
I can't serve miners.

