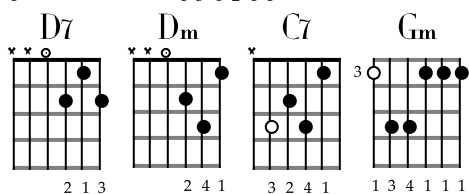
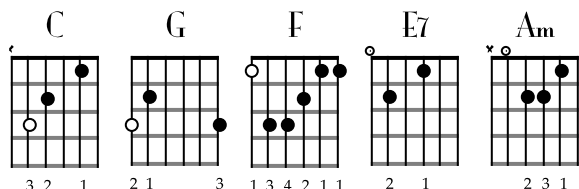


# Sunny Side of the Street

Jimmy McHugh and Dorothy Fields

Louis Armstrong (1933)

No Capo



Grab your coat and get your hat  
C E7  
F G

Leave your worries on the doorstep

Am D7  
Just direct your feet

Dm G C  
to the sunny side of the street

C E7  
Can't you hear the pitter-pat?  
F G

And that happy tune is your step

Am D7  
Life can be so sweet

Dm G C  
on the sunny side of the street.

C7 (Gm) C7  
I used to walk in the shade  
F (C7) F

with those blues on parade,

D7 (Am) D7  
but I'm not afraid

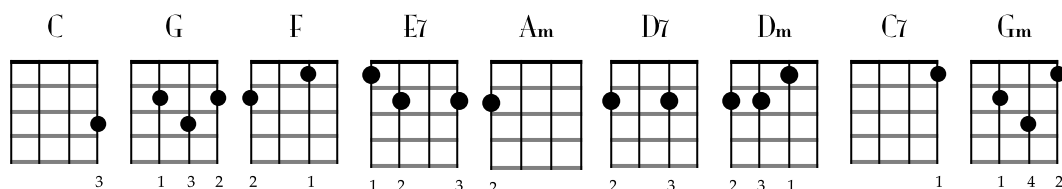
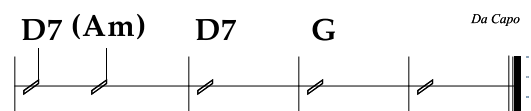
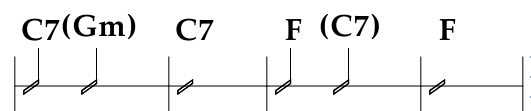
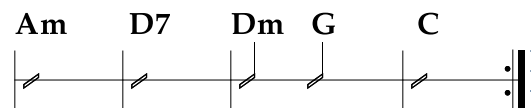
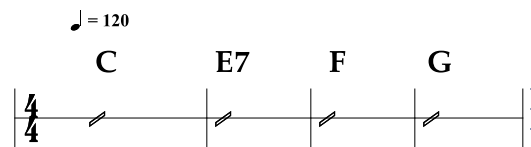
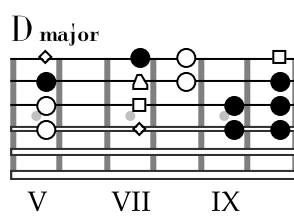
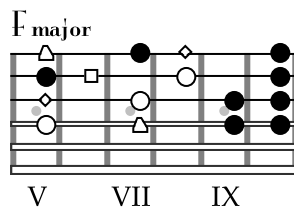
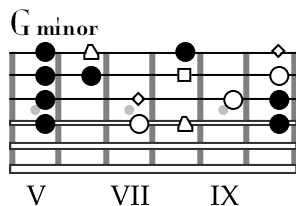
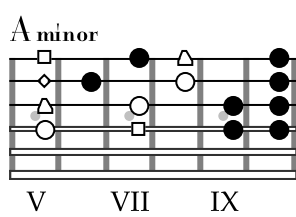
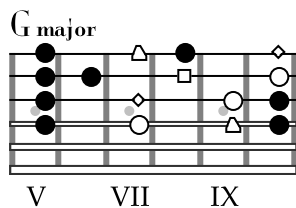
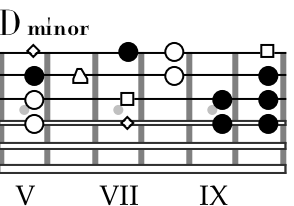
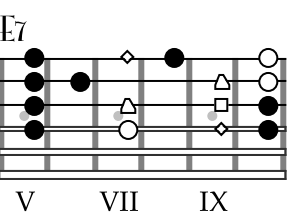
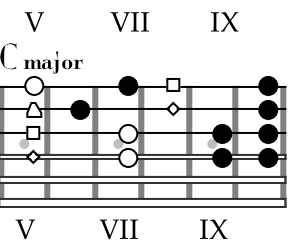
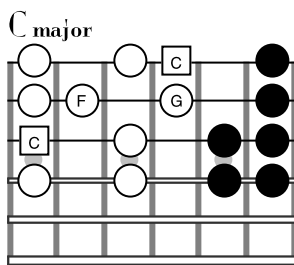
G  
This Rover crossed over

C E7  
If I never had a cent,  
F G

I'd be rich as Rockefeller

Am D7  
Gold dust at my feet

Dm G C  
on the sunny side of the street.



# Sunny Side of the Street

♩

G7 C E7sus(Bm7) E7 Fmaj7 G7

Grab your coat and get your hat, leave your worr ies on the door step  
 hear the pit ter- pat? and that hap py tune is your step  
 ne ver had a cent I'd be rich as Rock e fel ler,

TAB

2 0 3 0 2 0 0 4 3 1 2 3 2 0

5 Am D7 G7sus(Dm7) G Da Coda 1. 2. Em7 A7 Dm7 G7 C

Just di rect your feet to the sun ny side of the street Can't you  
 Life can be so sweet on the sun ny side of the street. I used to  
 Gold dust at my feet On the sun ny side of the

TAB

1 0 1 2 1 2 3 2 0 0 2 0 3 1 1 1

3 0 2 1 2 3 2 0 2 0 3

10 C7 Gm7 C7 F6 C7 F6

walk in the shade with those blues on pa rade; But

TAB

1 1 1 1 1

0 3 2 (2) 2 0 3 (3)

14 D7 Am7 D7 G7 D.S. al Coda ⊕ C

I'm not a fraid this ro ver crossed o ver If I street.

TAB

1 0 2 4 (4) 2 0 3 2 2 0 3

C G F E7 Am D7 Dm C Gm

VIII x x x x VII x x x x VIII x x x x VII x x x x VIII x x x x VII x x x x VI x x x x

3 2 1 1 3 1 2 1 2 3 4 1 3 1 4 1 3 2 4 1 1 1 1 3 3 1 1 1 3 2 4 1 3 2 4 1