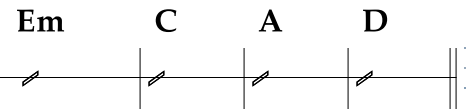


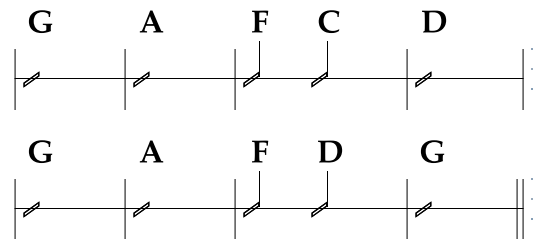
East Bound and Down

Jerry Reed and Dick Feller
Smokey and The Bandit (1977)
No Capo

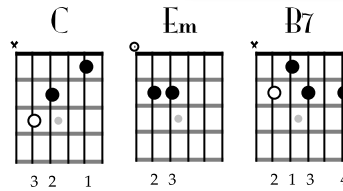
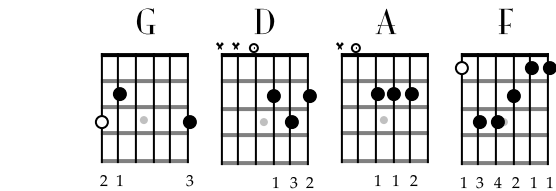
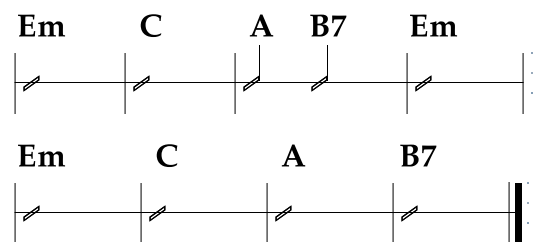
♩ = 126



Chorus



Verse



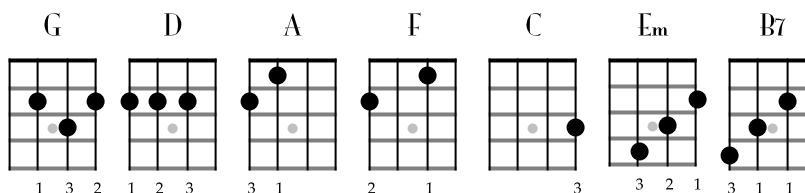
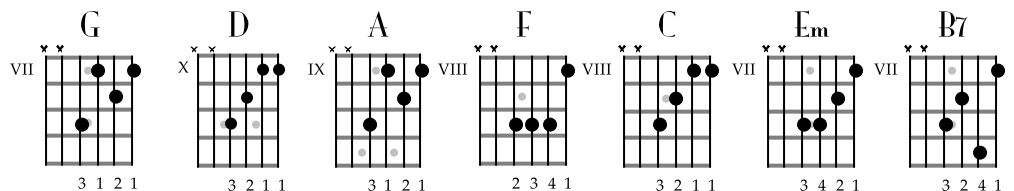
G A
East bound and down, loaded up and truckin'
F C D
And we gonna' do what they say can't be done
G A
We've got a long way to go, and a short time to get there
F D G
I'm east bound, just watch 'ole' Bandit run

Em C
Keep your foot hard on the peddle, son. Never mind them brakes
A B7 Em
let it all hang out 'cause we've got a run to make
Em C
The boys are thirsty in Atlanta, and there's beer in Texarkana
A B7
and we'll bring it back no matter what it takes

CHORUS

Em C
Old Smokey's got them ears on, he's hot on your trail
A B7 Em
And he ain't gonna' rest 'til you're in jail
Em C
So, you gotta' dodge him, you gotta' duck him you gotta' keep that diesel truckin'
A B7
just put that hammer down and give it hell

CHORUS



East Bound and Down

Diagram illustrating guitar chord positions for various chords, organized into two rows. Each diagram shows a six-string guitar fretboard with notes indicated by black dots (natural), white circles (sharps), and white squares (flats). Roman numerals V, VII, and IX are labeled below each diagram.

Row 1:

- G major:** Notes: G (1st fret, 1st string), B (2nd fret, 2nd string), C (3rd fret, 3rd string), D (4th fret, 4th string), E (5th fret, 5th string), F# (6th fret, 6th string).
- G major:** Notes: G (1st fret, 1st string), B (2nd fret, 2nd string), C (3rd fret, 3rd string), D (4th fret, 4th string), E (5th fret, 5th string), F# (6th fret, 6th string).
- D major:** Notes: D (2nd fret, 4th string), F# (2nd fret, 5th string), A (3rd fret, 6th string), B (4th fret, 1st string), C# (5th fret, 2nd string), E (5th fret, 3rd string).
- C major:** Notes: C (3rd fret, 5th string), E (3rd fret, 4th string), G (3rd fret, 3rd string), B (4th fret, 2nd string), D (5th fret, 1st string), F (5th fret, 6th string).

Row 2:

- B seven:** Notes: B (2nd fret, 5th string), D (3rd fret, 4th string), F# (3rd fret, 3rd string), A (4th fret, 2nd string), C# (5th fret, 1st string), E (5th fret, 6th string).
- A7:** Notes: A (2nd fret, 5th string), C# (3rd fret, 4th string), E (3rd fret, 3rd string), G (4th fret, 2nd string), B (4th fret, 1st string), D (5th fret, 6th string).
- F major:** Notes: F (1st fret, 4th string), A (2nd fret, 5th string), C (3rd fret, 6th string), D (3rd fret, 1st string), E (4th fret, 2nd string), G (4th fret, 3rd string).
- E minor:** Notes: E (5th fret, 5th string), G (5th fret, 4th string), B (5th fret, 3rd string), D (5th fret, 2nd string), F (5th fret, 1st string), A (5th fret, 6th string).

