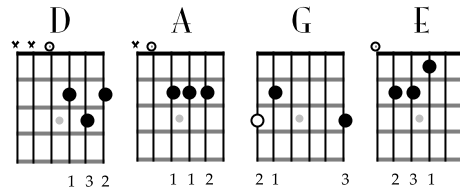


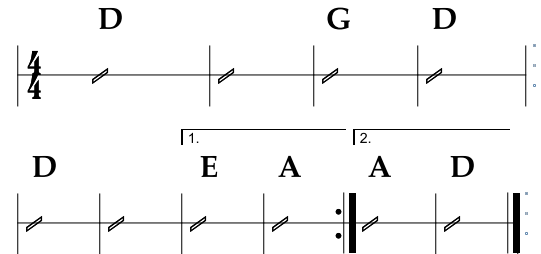
Glendale Train

John Dawson, New Riders of the Purple Sage
Glendale Train (1971)
No Capo

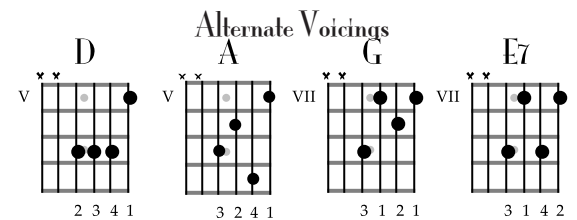
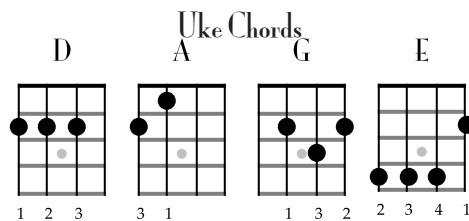
D
Somebody robbed the Glendale train
G D
This mornin' at half past nine
D
Somebody robbed the Glendale train
E A
And I swear, I ain't lyin'
D
They made clean off with sixteen G's
G D
And left two men lyin' cold
D
Somebody robbed the Glendale train
A D
And they made off with the gold



♩ = 126

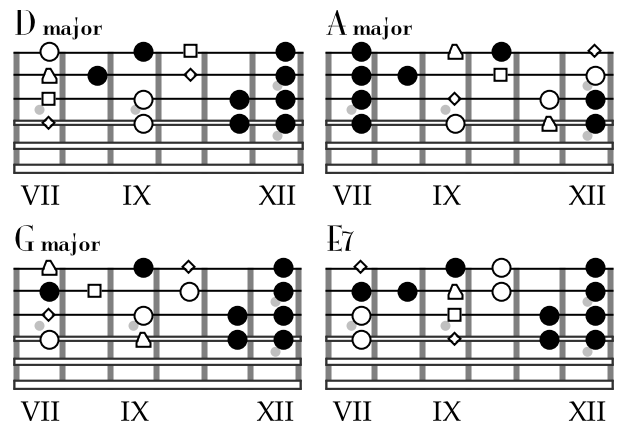
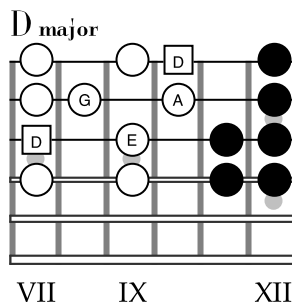


D
Charlie Jones was the engineer
G D
He had twenty years on the line
D
He kissed his wife at the station dear
E A
This morning at six thirty five
D
Everything went fine till half past nine
G D
When Charlie looked up and he saw
D
Men on horses, men with guns,
A D
And no sign of the law



CHORUS

D
Amos White was the Baggage man
G D
and dearly loved his job
D
The company, they rewarded him,
E A
With a golden watch and fob
D
Well Amos he was workin' time
G D
when the door blew off his car
D
They found Amos White in fifteen pieces
A D
Fifteen miles apart



CHORUS

