

If I Had a Boat

Lyle Lovett
Pontiac (1987)
Capo IX

G/C G/B G G/C G/B G
And if I had a boat, I'd go out on the ocean
G/C G/B G Em7 D/F#
And if I had a pony, I'd ride him on my boat
G/C G/B G G/C G/B G
And we could all together go out on the ocean
G/C D/F# G
me upon my pony on my boat

G G/C G/B G
Now if I were Roy Rogers, I'd sure enough be single,
G D/F#
Couldn't bring myself to marryin' no Dale,
G G/C G/B G
It'd just be me and Trigger, we'd go riding through them movies,
G D/F# G
And we'd buy a boat and on the sea we'd sail.

CHORUS

G G/C G/B G
Now the mystery masked man was smarter, he got himself a Tonto
G D/F#
'Cause Tonto did the dirty work for free
G G/C G/B G
But Tonto he was smarter, and one day said Kemosabe,
G D/F# G
"Kiss my ass, I bought a boat, I'm going out to sea"

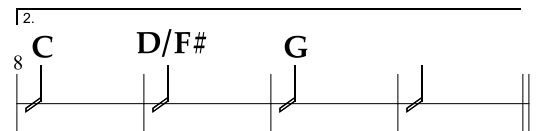
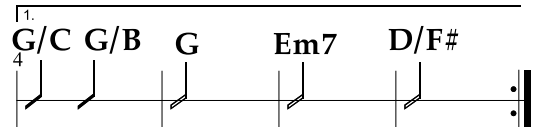
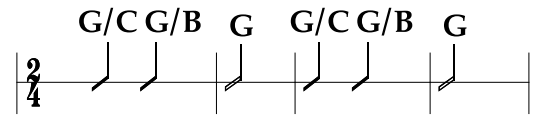
CHORUS

G G/C G/B G
Now if I were like lightning, I wouldn't need no sneakers,
G D/F#
Well I'd come and go whenever I did please,
G G/C G/B G
And I'd scare 'em by the shade tree, and I'd scare 'em by the lightpole,
G D/F# G
But I would not scare my pony on my boat out on the sea

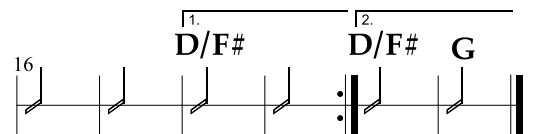
CHORUS

♩ = 92

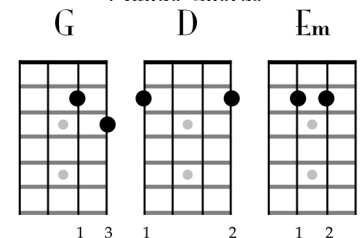
Chorus



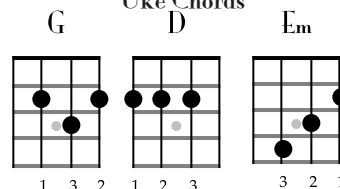
Verse



Mando Chords



Uke Chords



If I Had a Boat

Lyle Lovett

First system of guitar notation for "If I Had a Boat". The music is in 4/4 time. The first four measures are as follows:

- Measure 1: Treble clef, G chord, triplet of eighth notes (G4, A4, B4), quarter note (G4), quarter note (F#4), quarter note (E4). Bass line: 0, 3, 0, 3.
- Measure 2: Treble clef, G chord, triplet of eighth notes (G4, A4, B4), quarter note (G4), quarter note (F#4), quarter note (E4). Bass line: 0, 3, 0, 3.
- Measure 3: Treble clef, C chord, quarter note (C4), quarter note (D4), quarter note (E4), quarter note (F#4), quarter note (G4), quarter note (A4). Bass line: 0, 3, 0, 3.
- Measure 4: Treble clef, G/B chord, quarter note (G4), quarter note (A4), quarter note (B4), quarter note (C5), quarter note (B4), quarter note (A4). Bass line: 0, 3, 0, 3.

Second system of guitar notation for "If I Had a Boat". The music is in 4/4 time. The next four measures are as follows:

- Measure 5: Treble clef, G chord, triplet of eighth notes (G4, A4, B4), quarter note (G4), quarter note (F#4), quarter note (E4). Bass line: 0, 3, 0, 3.
- Measure 6: Treble clef, D/F# chord, quarter note (D4), quarter note (E4), quarter note (F#4), quarter note (G4), quarter note (A4), quarter note (B4). Bass line: 3, 2, 3, 2.
- Measure 7: Treble clef, G chord, quarter note (G4), quarter note (A4), quarter note (B4), quarter note (C5), quarter note (B4), quarter note (A4). Bass line: 0, 3, 0, 3.
- Measure 8: Treble clef, G chord, quarter note (G4), quarter note (A4), quarter note (B4), quarter note (C5), quarter note (B4), quarter note (A4). Bass line: 0, 3, 0, 3.

