

Old Man

Neil Young
Harvest (1972)
No Capo

1

Dm9
Old man look at my life,
D
I'm a lot like you were
Dm9
Old man look at my life
D
I'm a lot like you were

(D) F C G D F C F

D F
Old man look at my life,
C G
Twenty four and there's so much more
D F
Live alone in a paradise
C F
That makes me think of two

D F
Love lost, such a cost
C G
Give me things that don't get lost
D C
Like a coin that won't get tossed
F G D Am7 Em7 G
Rolling home to you

2

D
Old man take a look at my life
Am7 Em7 G
I'm a lot like you
D
I need someone to love me
Am7 Em7 G
The whole day through
D
Ah, one look in my eyes
Am7 Em7 G
and you can tell that's true

D F C G D F C F

D F
Lullabies, look in your eyes
C G
Run around the same old town
D F
Doesn't mean that much to me
C F
To mean that much to you

D F
I've been first and last
C G
Look at how the time goes past
D C
But I'm all alone at last
F G D Am7 Em7 G
Rolling home to you

CHORUS 2

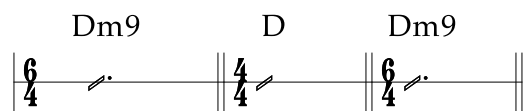
Dm9 D

CHORUS 1

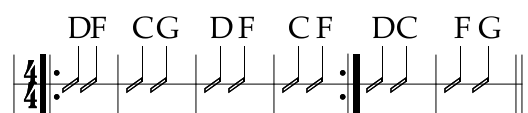
(D) F C G D

♩ = 72

Chorus 1



Verse



Chorus 2

