

G C
Where it began, I can't begin to know it
G D
But then I know it's going strong
G C
Was it the spring, and spring became a summer?
G D
Who'd have believed you'd come along?

G Em
Hands/Warm, touching hands/Warm
D C D
Reaching out, touching me, touching you
G C D
Sweet Caroline, good times never seemed so good
G C D
I've been inclined, to believe they never would
C Bm Am
(But now I'm/Oh, no, no)

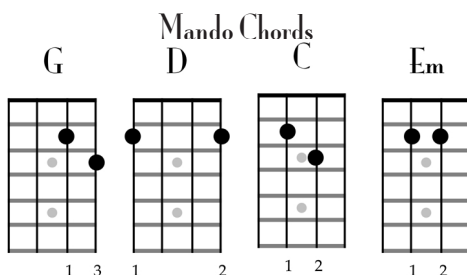
G C
Look at the night, and it don't seem so lonely
G D
We fill it up with only two
G C
And when I hurt, hurting runs off my shoulder
G D
How can I hurt when holding you?

CHORUS

Intro

2nd Half of the
CHORUS

G D C G
Sweet Caroline

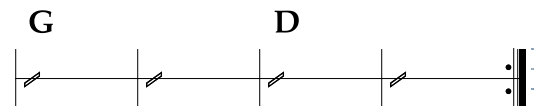
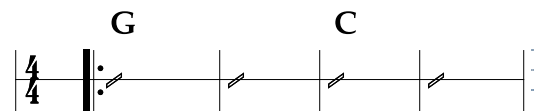


Sweet Caroline

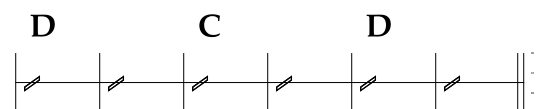
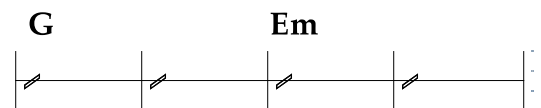
Neil Diamond
Single (1969)
Capo IV

♩ = 120

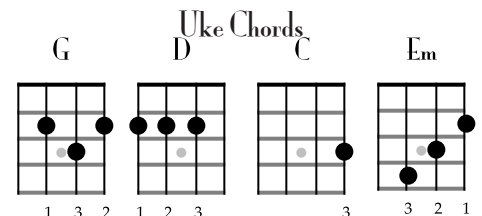
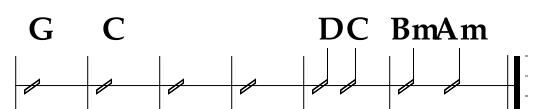
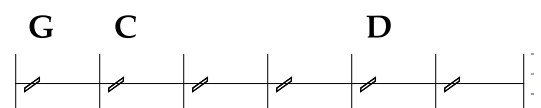
Verse



Bridge



Chorus



Sweet Caroline

Musical notation for the first system of "Sweet Caroline" in 4/4 time, featuring a treble clef, a key signature of one sharp (F#), and a 4/4 time signature.

The notation includes a melody line and a corresponding guitar tablature (TAB) line. The TAB line shows fret numbers (0, 2, 3, 4) and fingerings (0-2-3, 0-2, 3 2 0-3 2 0, 0 2 3-0 2, 3 2 0-3 2 0, 0 2 3-0 2, 0-4, 0-2).

Musical notation for the second system of "Sweet Caroline" in 4/4 time, featuring a treble clef, a key signature of one sharp (F#), and a 4/4 time signature.

The notation includes a melody line and a corresponding guitar tablature (TAB) line. The TAB line shows fret numbers (1, 3, 0, 1, 3, 0, 3, 1, 0, 3, 1, 0, 2, 3, 5, 1, 3, 5, 2, 3, 7, 5, 0, 4) and fingerings (1 3-0 1 3-0 3 1-0 3 1-0 2 3-5 1 3-5 5 3-7 5-0 4).



Alternate Voicings for G, D7, C, and Em chords, showing fingerings and fret numbers.

- G:** VII, 3 1 2 1
- D7:** VII, 1 1 1 3
- C:** VIII, 3 2 1 1
- Em:** VII, 3 4 2 1

Musical notation for the "Fill" section in 4/4 time, featuring a treble clef, a key signature of one sharp (F#), and a 4/4 time signature.

The notation includes a melody line and a corresponding guitar tablature (TAB) line. The TAB line shows fret numbers (8, 7, 0, (0)) and fingerings (8-7-0-(0)).

